

# THE ORDER BOARD

Publication Of The  
**Cumberland Division SER-NMRA Inc**  
**Tennessee Central Railway Museum**  
**Nashville Chapter NRHS**

Vol. 27 Issue 10

## 2007-2008 Cumberland Div-TCRM Schedule

Oct 6 Train Robbery Trip to Watertown  
Oct 11 TCRM Thursday Night Meeting Nashville TN  
Oct 13 Super Fall Foliage Trip I to Cookeville  
Oct 20 Super Fall Foliage Trip II to Cookeville  
Oct 27 Super Fall Foliage Trip III to Cookeville  
Nov 3 Fall 2007 Cumberland Div Meet & Model Train Show  
Nov 3-11 Whistlestop Weekend at Adventure Science Center  
Nashville TN  
Nov 10 Murder Mystery Trip to Watertown  
Nov 24 North Pole Express Trip with Santa to Watertown  
Dec 1 Two North Pole Express Trips with Santa to Lebanon  
Dec 8 Two North Pole Express Trips with Santa to Lebanon  
Aug 30-31 Day Out With Thomas 2008 at TCRM  
Sep 6-7 Day Out With Thomas 2008 at TCRM

## Program Notes

October 11, 2007- **Operation Lifesaver** presentation by recertified OLS presenter & TCRM member **DeLoy Nelms**. Also, **Airbrush Painting – Hands-On** led by member **Pete Boehme**.

## Host Committee – October 11, 2007 Meeting

Harry Batey	Brandon Baxter	Terry Bebout
George Benson	Marvene Bilbrey	James Bilbrey
Phillip Blair	<b>Pete Boehme*</b>	Roy Brantley
James Brooks	Gene Caldwell	Charlie Campbell
Grant Carpenter	Charles Carter	Terry & Jane Coats

\* = Host Committee Chair

## New Members

**Kathy Holman**, Nashville TN (Family)  
**Dave Lynam**, Murfreesboro TN MMR #354  
**Fred Pfeiffer**, Nashville TN (Family)  
**Thomas Ryan**, Brentwood TN (Family)

Please welcome our new members and make them feel at home at TCRM!

## Division Meet-Model Train Show on Nov 3

By **Bob Hultman**

Our Cumberland Division Fall 2007 Division Meet & Model Train Show is going to be on Saturday, Nov 3 here at TCRM. We'll have the Company Store, dealer tables, multiple live clinics by talented and knowledgeable modelers, the HO and N scale model RRs operating plus food service on the diner car for attendees. The Meet is free to members.

The next setup for the HO modular RR will be at Adventure Science Center in Nashville starting the afternoon and evening of Nov 3, 2007, right after the end of the Fall 2007 Cumberland Division Meet.

## Hobby Shop News

By **Mark Perry**

**SALE NEWS!!** The Hobby Shop currently has all locomotives and rolling stock on sale for members only! Sale price is 35% off the list price, except for BLI locomotives – they are 30% off list price. The sale applies to in-stock items only, not to special order items. Come early and often, bring your credit cards and fulfill those pending car and locomotive orders your railroad management wants to place.

## Tennessee Central Railway Museum Hobby Shop Sales Policy

The Cumberland Division-TCRM Board of Directors have reviewed the following policy. The reason for establishing this policy is to gain better control over the hobby shop inventory and business practices. This policy is effective upon receipt to members.

- All current TCRM members will receive a 25% discount off of current retail list price or 15% above dealer net cost of special discounted items offered by the distributors.
- Members have 30 calendar days to pay for and pick up their special orders after having received notice from TCRM hobby shop staff that the order is available for payment/pickup.
- Members must not remove stock items from shelves for hold. All stock items are for sale on a first come, first serve basis.
- Special orders do not go into stock if a member ordered the wrong item or decided he/she does not want it. Members must purchase their special orders.
- Any item removed for use on Cumberland Division-TCRM owned model railroads must be reported to the clerk on duty before it is taken from the shop.
- Any member desiring to work as hobby shop clerk must be trained by **Mark Perry** on the sales computer system.

## TCRM Excursion Train News

By **Bob Hultman**

We ran the Watertown Fall Mile-Long Yard Sale Excursion Train last Saturday. We had 8 revenue cars in the consist, plus the souvenir car, power car and 2 private cars pulled by a 4-unit locomotive consist, F40PH 375, F7Bs 715 & 719 & E8A 6902. The trip went well, departing and arriving as scheduled. There was even an NERR freight train operating during our trip. There were no operating incidents reported and everyone stayed safe. Passenger survey forms continue to comment on the friendliness

**NEXT MEETING - TCRM Willow St Building on October 11, 2007 6:30 PM**

and helpful approach of our car hosts-hostesses. Excellent job, everybody! Let's be sure to keep it up for the rest of the 2007 excursion train schedule and on into the 2008 trips.

Our next trip is the Oct 6 Watertown Train Robbery Trip. If you want to work this trip, please call **Bob Hultman** landline 615-833-5158 or cell 615-513-7187 or E-mail [hultman@bellsouth.net](mailto:hultman@bellsouth.net) We need several more volunteers to properly staff the train.

## Sick Call – Beckie Hultman

By **Bob Hultman**

**Beckie Hultman** had left knee replacement surgery on Monday, Oct 1 at Southern Hill Medical Center. She expects to return home Thursday for knee rehab vs going to a rehab center.

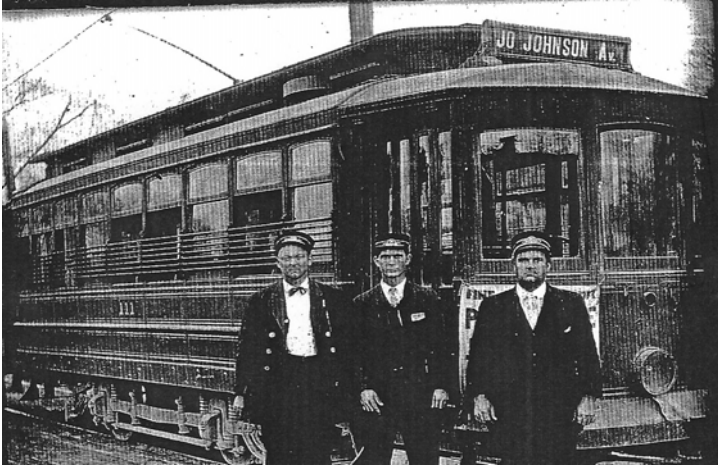


Photo of a Nashville Trolley Car #111; digital image supplied by **Aaron Tanzabel**

## NRHS News

By **Herb Roth**

**Important information** - 2008 Dues Cards will be mailed DIRECTLY to Chapter members in October. Send your check covering Nat'l and Chapter Dues to me - Herb Roth, 8135 Devens Dr in Brentwood, TN 37027. Make check payable to NRHS Nashville Chapter.

**Most Important** - More stringent Dues Collection Rules have been set by Fernley & Fernley, a company hired by NRHS to handle Dues and Donations. If your dues have not reached the Nat'l office by March 30, 2008 you will be listed as "resigned for failure to pay dues". So please make sure I receive your check before March 17th so that I can complete the necessary paper work and computer entry. Thank you for your cooperation. Please e-mail me or phone me if you have any questions. e-mail [hroth95229@aol.com](mailto:hroth95229@aol.com) phone 615-370-3429

## New Corner Module at TN State Fair RR



View of **Bob Hultman's** Athearn DT&I SD38 252 in the lead and Athearn GP35 350 trailing as they pull a train on the outside main track at the Cumberland Valley Model Railroaders HO modular RR set up at the Tennessee State Fair. The train is traveling over one of the new corner modules built by **Pete Boehme** and will be entering onto **Len Hollinger's** 16' Firestone module group. Digital photo by **Josh Winstead**